

125 MAIN STREET

WESTPORT, CT



USE
RETAIL

SIZE
4,227 RSF
DIVISIBLE TO 2,392 SF

RENT
ON REQUEST

AVAILABLE
IMMEDIATELY

DESCRIPTION: Excellent Main St retail space available with prominent signage on both Main Street and Parker Harding Plaza. Currently Express Edit, neighboring retailers include Sundance, Athleta, Brochu Walker, Vineyard Vines, Brandy Melville, Madewell and J.Crew. Main level is 2,392 RSF with 25' of frontage, lower level is 1,835 RSF. Features include an elevator and two ADA restrooms in place.

EXCLUSIVE AGENT:

Sharon Maddern

Office 203. 341.7491 | Cell 203.981. 9897

sharon@davidadamrealty.com



57 Wilton Road, Westport, CT 06880 | Phone 203.221.8148 | Fax 203.341.7494 | www.davidadamrealty.com

The information above has been obtained from sources believed to be reliable. While we do not doubt it's accuracy, we have not verified it and make no guarantee, warranty or representation about it. It is your responsibility to independently confirm its accuracy and completeness.

125 MAIN STREET

WESTPORT, CT

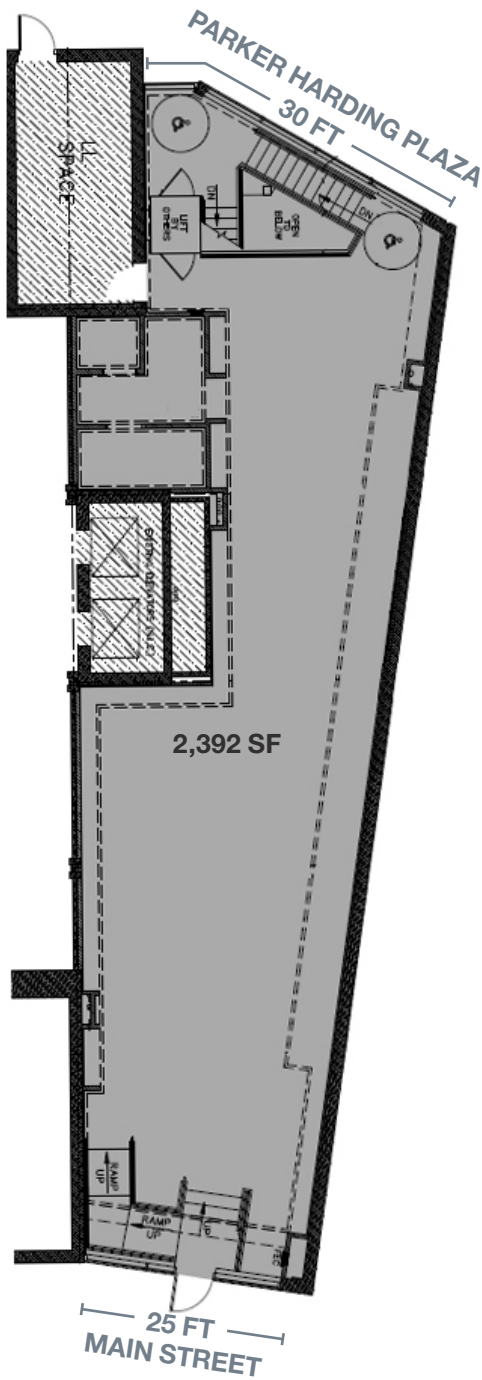


125 MAIN STREET

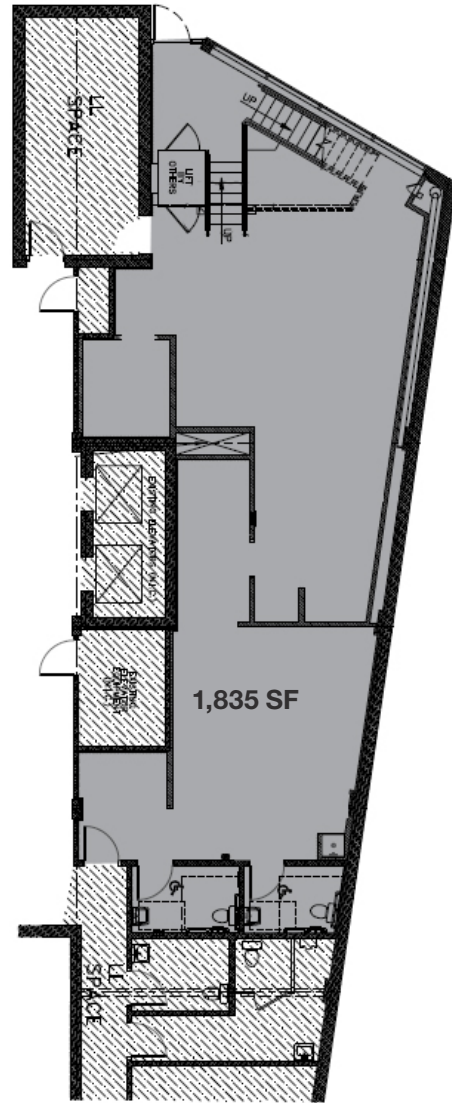
WESTPORT, CT



GROUND FLOOR



LOWER LEVEL



57 Wilton Road, Westport, CT 06880 | Phone 203.221.8148 | Fax 203.341.7494 | www.davidadamrealty.com

The information above has been obtained from sources believed to be reliable. While we do not doubt it's accuracy, we have not verified it and make no guarantee, warranty or representation about it. It is your responsibility to independently confirm its accuracy and completeness.